

# Water Environment Improvements Project Evidence Form

## Scope & Purpose

This form is to be used by the external Water Environment Governance Group (WEGG), to review, validate and formally approve the length of bluespaces improved for the Water Environment Improvements ODI. The form will be completed by the Water Environment Team with support from project partners and presented to the WEGG. After formal approval, the km of water environment improved will be recorded against the ODI and projects will be marked as completed on the Water Environment Scorecard and illustrated as delivered in the Bluespaces Mapping Portals.

## Project Name

Destination Tweed: North Northumberland

## Project Lead

Company/ Organisation	Named Lead	Position
Tweed Forum	Luke Fisher	Destination Tweed Project Director

## Bluespaces Improved

Year	Claimed	Originally Proposed	Reason For Any Change
Year 5	3.6 km	16 km	Funding for delivery of access improvements within the England Northumbrian Water area are still awaiting approval, improvements delivered to Bluespaces only impact 3.6 km so far

## Water Environment Assurance

This project has been reviewed internally to ensure it has delivered benefits above and beyond our baseline and regulatory obligations to improve the water environment accessible to customers across at least two out of three aspects. Following our assurance process, the project was approved by both our internal and external groups for review before delivery. This form presents evidence of project completion and the outputs achieved, to request project sign off.

Level	Project Acceptance Date	Project Approval Date	Completed Project Sign Off Date
Project Team	May 2022 September 2022	NA	N/A
Water Environment Steering Group (Internal)	September 2022	September 2022	N/A
Water Environment Governance Group (External)	October 2022	October 2022	June 2025

## Project Timescales

Candidate Project Approved	Project Initiated	Project Completed
October 2022	February 2023	March 2025

## Project Summary and Highlights

### Summary

Tweed Forum, NWG and partners have worked together through the Destination Tweed project to deliver improvements to 3.6 km of Bluespaces along the River Tweed in north Northumberland at Norham and Berwick.

Destination Tweed is a £25m, five-year, multi-partner project, led by Tweed Forum, that commenced in 2022, with the ambition of creating a 182 km recreational trail along the river from the Tweed's source north of Moffat in Scotland to where it enters the North Sea at Berwick south of the English border. It comprises 13 projects focusing on Environment, Community and Economy and, on completion, will have driven significant access improvements to the 'River Tweed Trail' providing a focal point for a wide range of conservation and enhancement projects throughout the Tweed waterbody. Ultimately Destination Tweed intends to create a high-quality cross-border walking and cycling route delivering multiple economic, environmental, community, engagement and wellbeing benefits.

Along the section of the River Tweed that runs through north Northumberland, 30.5 km of bluespace improvements could be delivered by the end of five years. Originally, 16 km of improvements were proposed, enabled by NWG through this Bluespaces funding. Delays in project activity within the multi-year programme mean that 3.6 km of bluespaces have been improved, around Norham and Berwick, with focused activity through three of the 13 projects:

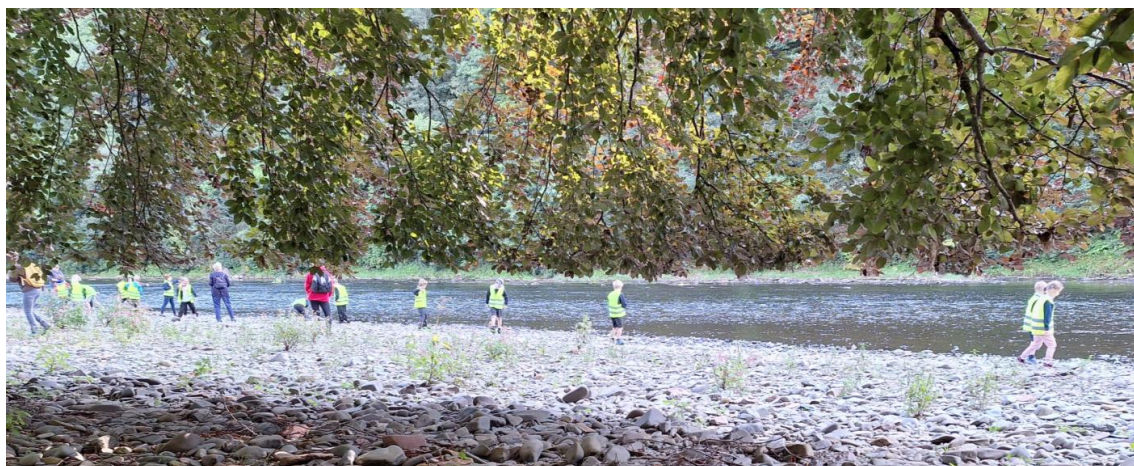
- Tweed WATCH Education Programme
- Connecting Threads Cultural Programme
- Pollinators Along the Tweed habitat creation

Project staff have focussed on engaging schools and rural communities with the river and the water environment, delivering engagement events and activities throughout the project area related to the natural and historic heritage of the river including creating wildflower meadows.

Other workstreams indirectly supported by Bluespaces include ongoing Invasive Non-Native Species (INNS) removal, planting riparian trees, and capital works to upgrade and connect the route throughout its length. Work on the last element has so far focussed on the Scottish reaches of the Tweed. Confirmation of funding for the Northumberland section is expected in 2025, with works likely to commence in 2026, offering potential for further Bluespaces input during this latter phase of the project if opportunities for additional improvements are identified.

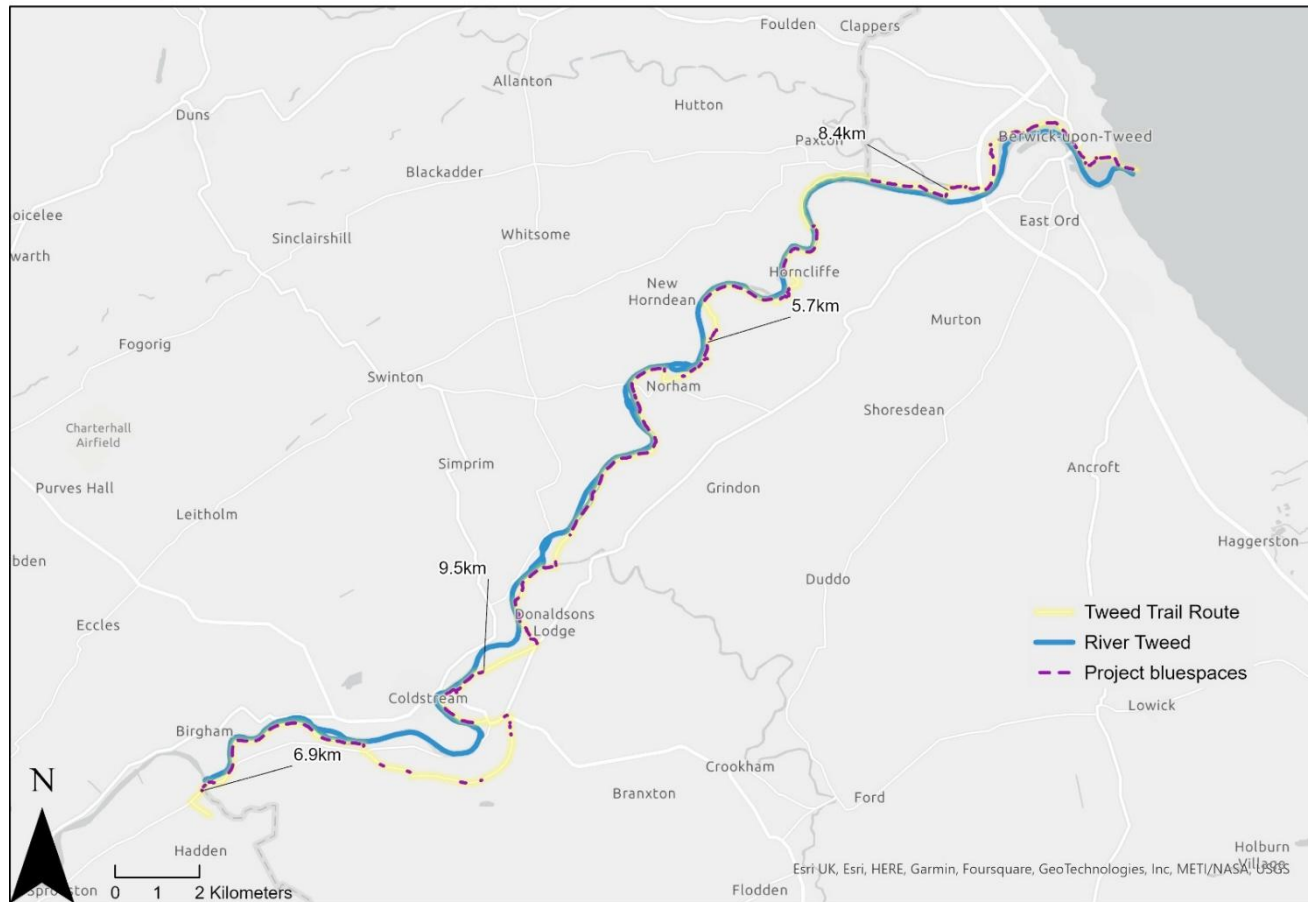
### Highlights

- 7 education events, engaging with school children at Glendale Children's Countryside Show, and with primary and secondary schools in Berwickshire.
- 23 cultural public engagement events delivered, including themes of river history and culture, environmental awareness raising and conservation.
- Community and landowner engagement, delivering pollinator-focused events for communities, and developing partnerships with landowners to identify pollinator habitat enhancements at sites.
- 0.3 ha of pollinator-friendly meadow management created.



## Maps

### Destination Tweed: Overview

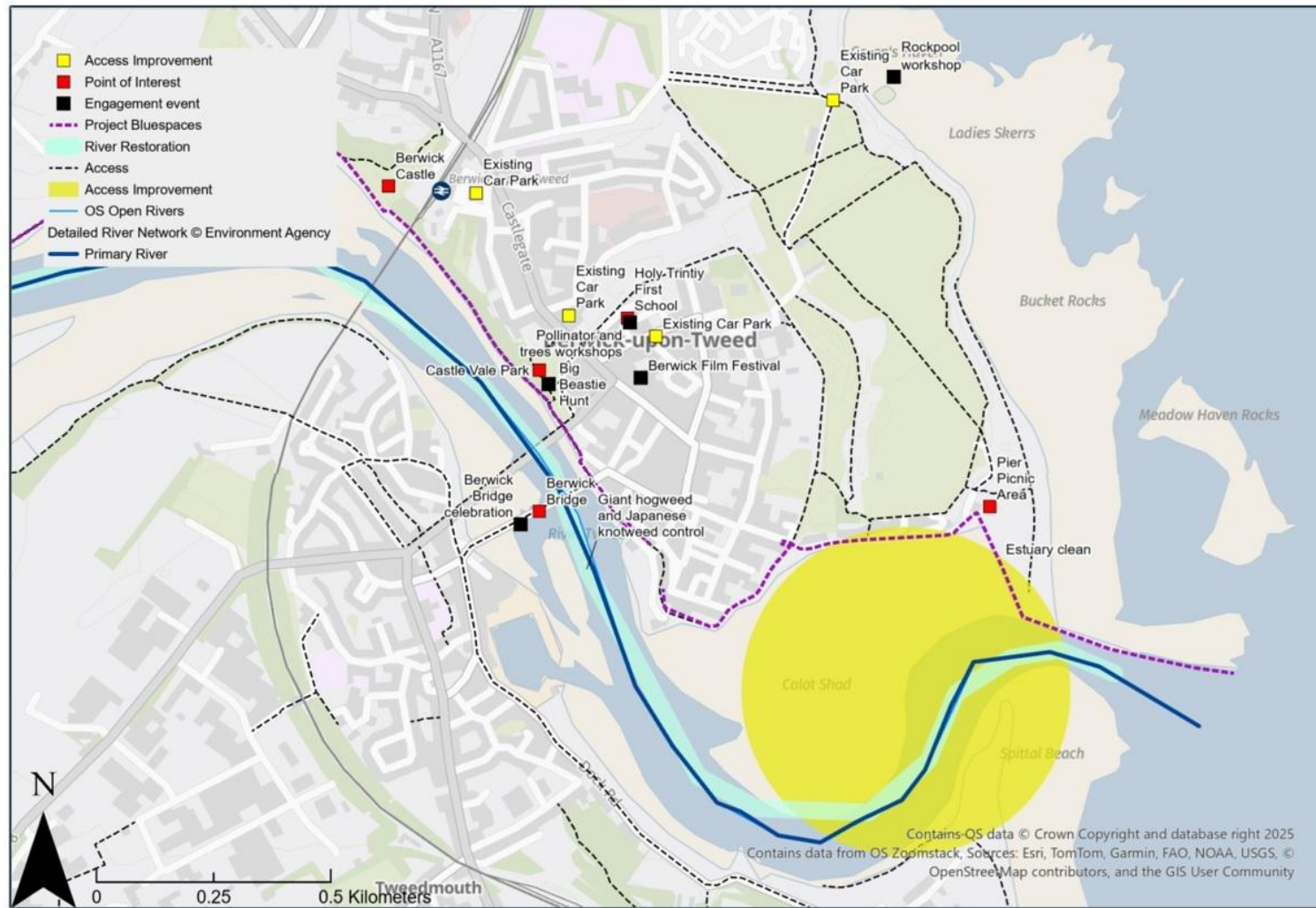


**Total length of bluespaces: 30.5km**

Figure 1: Total Bluespaces which should be improved through the Destination Tweed project in the North Northumberland project area



## Destination Tweed - Berwick



Total length of Bluespaces: 2.5 km

Figure 2: Improvements delivered at Berwick during the two-year Bluespaces project

## Destination Tweed - Norham

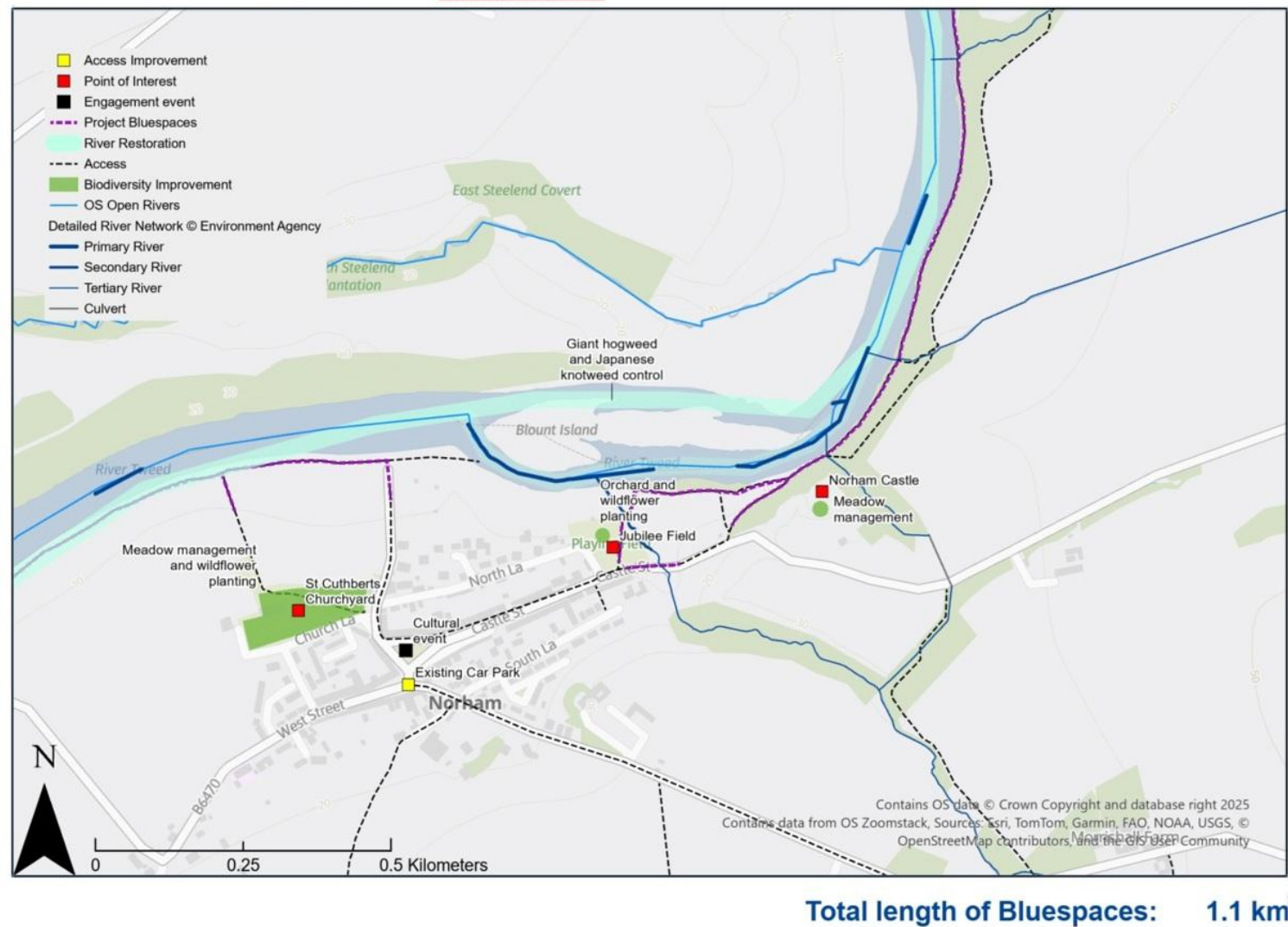


Figure 3: Improvements delivered at Norham during the two-year Bluespaces project

## Project Outputs, Benefits & Evidence Against Criteria

Access, Facilities & Recreation	
Expected Project Outcomes	Benefits
<ol style="list-style-type: none"> <li>1. The establishment of the Tweed Trail will increase access to and engagement with the water environment, with the trail running close to the river or retaining a connection to the river through views. The trail will contribute to improved health and wellbeing by establishing a more accessible footpath and signed diversion for bikes where necessary. New sections of path are to be built and upgrades made to existing routes.</li> <li>2. Project officers will deliver an education programme targeted at rural communities, and primary and secondary schools, educating participants about the importance of our natural assets and water environment and how to manage and understand them with associated skills and training ambitions. The officers will also work with local communities to improve local bluespaces.</li> <li>3. Officers will link with the 'Connecting Threads' Cultural Programme, with further staff posts based in the area directly working with stakeholder organisations, communities, and individuals.</li> <li>4. An interpretation programme will provide supporting physical and digital interpretation materials designed to share information and influence positive environmental behaviours</li> </ol>	<ul style="list-style-type: none"> <li>➤ A1: Increases access to, engagement with and enjoyment of the water environment</li> <li>➤ A2: Benefits health and wellbeing through:</li> <li>➤ A3: Influences positive environmental behaviors</li> </ul>
Outputs	
<ol style="list-style-type: none"> <li>1. Capital works have so far been focused upstream of the Bluespaces catchment area, delivery improvements that will be of benefit to downstream reaches. Work packages have been scoped across the River Tweed Trail and the Full Business Case to Scottish Government was approved for £10m on 19th June 2024. The contribution from Northumberland County Council (original source UK government) is still being finalised and this will allow work to take place in Northumberland. The funding decision is anticipated to happen in 2025, unlocking spend on access improvements in Northumberland before the completion date of 2028.</li> <li>2. The TweedWATCH education programme employs a project officer with a remit of working throughout the project area. A significant proportion of that work has taken place in Northumberland, including The Big Beastie Hunt (Castle Vale Park, Berwick), Glendale Children's Countryside Show (Wooler), three education workshops with pupils from Holy Trinity First School (Berwick) and two fieldwork sessions, run by the Pollinators along the Tweed project officer, with teachers and pupils from Berwickshire High School. See Other Supporting Evidence section, at end of report, for further details of these events.</li> <li>3. The project has delivered 23 cultural public engagement events (detailed in Other Supporting Evidence section), including themes of river history and culture, environmental awareness raising and conservation, creative responses to river environment, increased sense of ownership and care for the river, the river as a connector, and the wildlife of the river system and its conservation. The project's Lower Tweed project officer, who has been in post since April 2023, has progressed a number of different events in the area.</li> <li>4. Digital interpretation material for the project has been progressed to a very high standard with a Destination Tweed website in place, a regular newsletter, animated film and a dedicated social media following that is constantly growing. The project held a business engagement event in Berwick-upon-Tweed and focused on a number of social media releases on Berwick/Northumberland. Complexities over delivery mechanisms, governance and funding means that physical interpretation will be progressed at a later stage of the project, offering scope for follow-on Bluespaces funding to support delivery of any additional improvements that may be identified.</li> </ol>	



## Evidence



Big Beastie Hunt stall



School engagement activities with primary school children



Fieldwork sessions with High School pupils





Canoe flotilla travelling from Norham to Berwick, and salmon puppet-making event



Water-borne musicians performing Flux Alluvia



Annie Lord, artist in residency's exploration of Berwick Old Bridge



Tweed Estuary clean-up



## Wildlife & Biodiversity

Expected Project Outcomes	Benefits
<ol style="list-style-type: none"> <li>1. Project officers will work with local communities and partners to deliver biodiversity improvements to local bluespaces, including planting riparian trees and creating wildflower meadows. This aspect will be delivered in partnership with the PATT project.</li> <li>2. The Tweed Forum will facilitate an ongoing Invasive Non-Native Species control program. Vital management work related to Japanese knotweed, Giant Hogweed, Skunk cabbage and Himalayan balsam will be delivered throughout the catchment.</li> </ol>	<ul style="list-style-type: none"> <li>➤ B1: Improves the quantity, quality and connectivity of habitats</li> <li>➤ B2: Improves the conservation status and or abundance or distribution of species</li> <li>➤ B3: Reduces risk or impact of invasive non-native species (INNS)</li> </ul>

## Outputs

1. The first year of Pollinators Along the Tweed focused on community and landowner engagement, delivering pollinator-focused events for communities, and developing partnerships with landowners to discuss pollinator habitat enhancements at sites. The project engaged with English Heritage, Norham Development Trust, and Northumberland County Council, implementing habitat enhancement St Cuthbert's Church and The Jubilee Field in Norham.

At St Cuthbert's Church, meadow management was reinstated / created (c. 500 m<sup>2</sup> in total). These areas will be managed by volunteers to provide complementary pollinator-friendly habitat to the existing tall herb grassland and shrubs on site. In March 2023, the southern boundary of this church and the two entrance points were planted with native wildflower bulbs to boost early season availability for pollinators, involving 20 local volunteers. At the Jubilee Field, a newly establish orchard and field margins are now managed to support pollinating insects and in March 2023 the northern boundary of this field was planted with native wildflower bulbs to boost early season availability for pollinators, involving 20 local volunteers.

In September 2024, grassland enhancements at Norham Castle were completed in collaboration with English Heritage, seeding c. 2,500m<sup>2</sup> with a native, locally-grown hay meadow seed mix by local contractors. A ten-year management plan for the site has been developed by the conservation officer both to ensure successful meadow establishment and that the site continues to support local pollinators. Additional opportunities for enhancements have been identified at Norham Castle and Berwick Castle and Ramparts.

2. Tweed Forum has completed its 2<sup>1st</sup> control season for Invasive species (this work is not directly supported by NWG). The programme is focused on the whole of the Tweed catchment with the English Catchment area totaling 800 km<sup>2</sup>. In 2023, 5594 Giant Hogweed plants and 394 Japanese Knotweed stands were controlled; in 2024, there were 4137 plants and 305 stands controlled, respectively. There has been much group and volunteer engagement. For example, volunteers from Berwick Coastal Partnership engaged with the project, a short talk was given and the group hand-pulled Himalayan Balsam plants located on the coastal stream leading to the sea.

## Evidence



Volunteers being trained in INNS identification, and tackling Giant Hogweed



School children making seed-bombs and seed pebbles at a pollinator workshop



Public engagement: learning about meadow management, and identifying pollinator-friendly plants



Norham Castle meadow

Water Quality	
Expected Project Outcomes	Benefits
No project outcomes identified	NA
Outputs	
N/A	
Evidence	
N/A	



## Additional & Secondary Benefits

Expected Project Outcomes	Benefits
<ol style="list-style-type: none"> <li>1. The project will benefit many rural communities in North Northumberland providing volunteering opportunities, supporting local businesses and driving tourism</li> <li>2. The effective delivery of aspects of the Destination Tweed project in NWG's operational area will support the wider strategic project in Scotland and support delivery of landscape-scale benefits</li> </ol>	<ul style="list-style-type: none"> <li>➤ D2: Provides benefits to local communities, the local economy or NWG</li> <li>➤ D3: Supports strategic project or investment into strategic partnership or landscape/regional activity</li> </ul>

## Outputs

1. The collection of Destination Tweed projects in the area of focus for NWG have already benefited rural communities by providing volunteer and engagement opportunities as detailed above.

Within the Bluespaces project timeframe, the project's Economic Development Group that has representation from NCC and Visit Northumberland, meet regularly to consider how best to maximise their support to local businesses by providing assets that they will find useful for the future promotion of the route. They have also employed a Tourism role in partnership with South of Scotland Destination alliance with support of Shared Prosperity Fund (SPF). That role has had a focus on raising awareness with businesses in support of the River Tweed Trail as driving tourism will be key to the perceived success of all that they are doing. Their work included experience design workshops in Berwick-upon-Tweed and a day trip for operators and new businesses to Cornhill on Tweed – Twizel - Duddo Stones - Ford & Etal – Norham - Union Chain Bridge - Honey Farm – Berwick, providing opportunities to learn, network and connect and for cross-border collaboration.

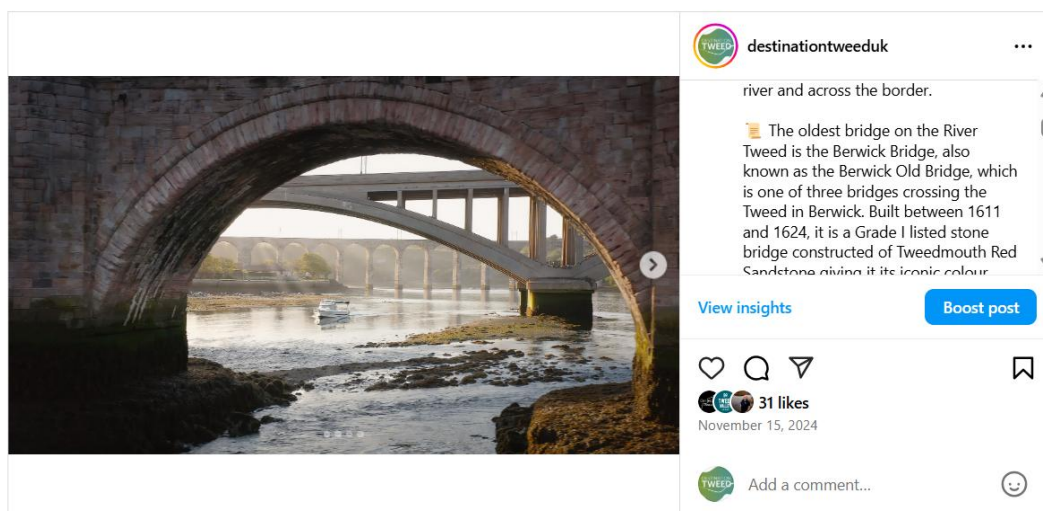
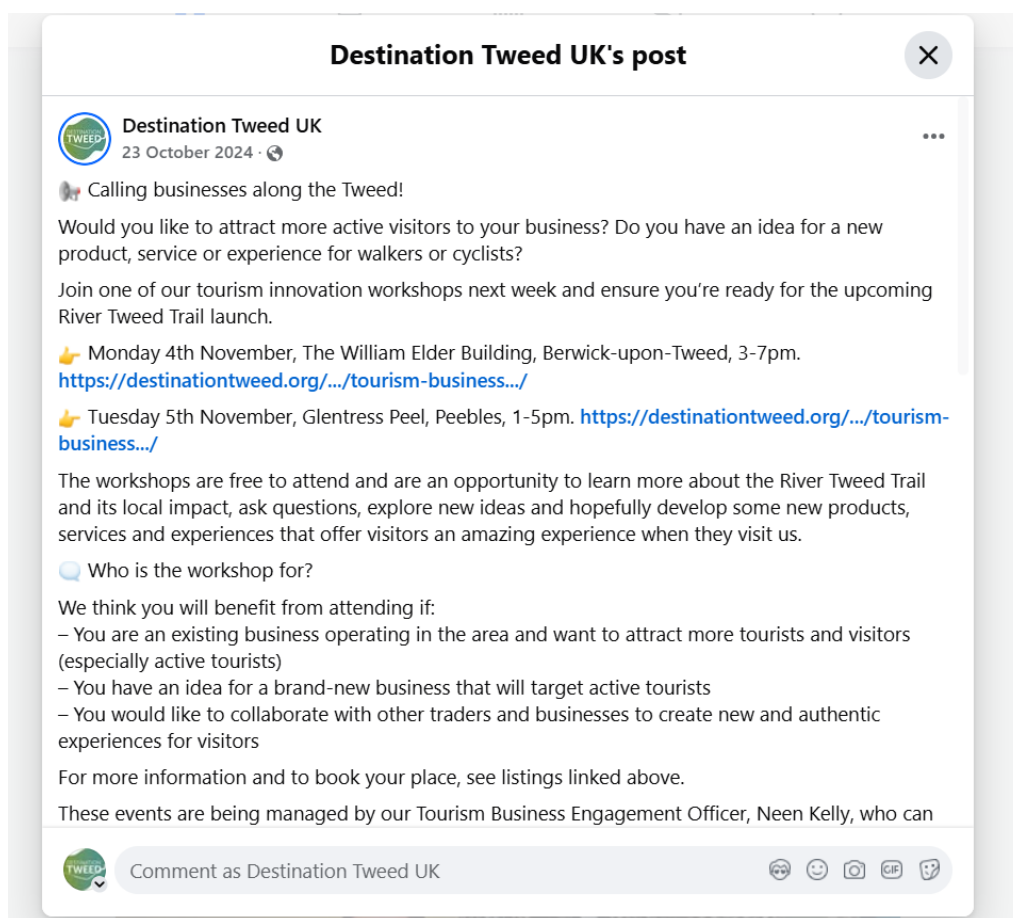
2. The Destination Tweed area is large. A lot of interventions are upstream to deliver downstream benefits. The collective efforts of 13 projects and the inputs of over 30 funders including NWG will therefore support the delivery of landscape-scale benefits.

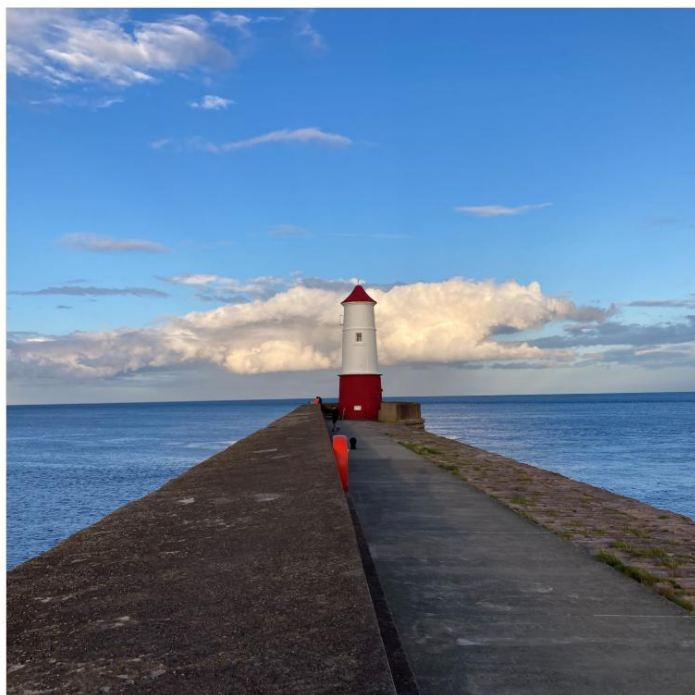
## Evidence



Local businesses share experiences during Destination Tweed workshops and a cross-border day trip

## Customer Testimonies & Media





destinationtweeduk

**destinationtweeduk** · 28w  
The River Tweed flows out to the North Sea at Berwick-upon-Tweed where this spectacular view is waiting for you 🇬🇧  
  
The pier extends for about half a mile from the north side of the River Tweed into the harbour mouth. The pier was constructed 1819-1825 by John Rennie with the lighthouse, designed by Joseph Nelson, added in 1826.  
  
Unfortunately, the lighthouse is not open for public use however, there is still a fantastic walk along the pier with benches to sit and take in the outstanding view. Why not grab a

View insights
Boost post

17 likes  
September 9, 2024

Add a comment...



## Destination Tweed UK

15 November 2024 · 🌐

### 🌟 Friday Feature – Bridging the River 🇬🇧

Over 45 bridges cross the River Tweed. From small structures across narrow stretches to monumental arched bridges and viaducts, each tells a story of engineering innovation, connecting communities across the river and across the border.

🏰 The oldest bridge on the River Tweed is the Berwick Bridge, also known as the Berwick Old Bridge, which is one of three bridges crossing the Tweed in Berwick. Built between 1611 and 1624, it is a Grade I listed stone bridge constructed of Tweedmouth Red Sandstone giving it its iconic colour.

The Bridge was recently the focus of [Connecting Threads: Tweed River Culture](#) artist in residency Annie Lord, whose creative practice was part of the celebrations for the Berwick Old Bridge 400th anniversary!

🌊 At the other end of the river in the Upper Tweed, is Carlowse Bridge at Tweedsmuir. Built in 1783, this bridge was an important crossing point over a narrow stretch of the river and meant that the local community could access the Kirk without the need to hop over stepping stones in their Sunday best!

🌉 The first bridge to cross the Anglo-Scottish border was constructed in 1766 at Coldstream and links Coldstream with Cornhill-on-Tweed in Northumberland.

🇬🇧 An iconic wrought iron suspension bridge, the Union Chain Bridge, Horncliffe also links Scotland to England. Opened in 1820, the bridge is a designated landmark in Scotland, England and surprisingly America, having been recognised as an important structure to civil engineering heritage.

🏰 Kelso Bridge is a story of community investment and tragedy. The first bridge was opened on the site in 1754 funded by private investors. This replaced a ferry service which was dangerous in bad weather. However, in 1756 an arch collapsed, killing 6 people. The bridge was repaired after this but a storm in 1797 caused severe damage to the foundations and the bridge collapsed into the river.



## Lead Partner Quotes & Testimonials

*We are grateful of the opportunity to work with Northumbrian Water Group and appreciate the financial support to three of the Destination Tweed initiatives.*

**Luke Fisher, Destination Tweed Project Director**

## Other Supporting Evidence

### Access, Facilities and Recreation – additional information

#### **Education activities (Output A2)**

##### The Big Beastie Hunt (July 24')

Along with Pollinators Along the Tweed Project Officer Kate O'Leary, TweedWATCH attended the Big Beastie Hunt at Castle Vale Park in Berwick. This family event invited the public to engage with minibeasts of all types and to learn about their importance. Kate delivered a seed bomb activity and TweedWATCH focused on compost creatures and the importance of decomposer minibeasts.

##### Glendale Children's Countryside Show, Wooler (June 24')

TweedWATCH attended the Glendale Children's Countryside Show hosted by the Glendale Agricultural Society in Wooler in June. The project took along their river catchment models and talked to groups of children about nature flood defence and demonstrated with water how factors like a lack of trees and a straight channel can cause flooding in towns along the river. Approximately 1600 children attended this event.

##### Holy Trinity First School, Berwick Upon Tweed Education Workshops 2024

##### **Year 2: Pollinator Friendly School Grounds (May 24')**

After the success of last year's pollinator workshop delivered in partnership with Buglife, Holy Trinity Year 2 teacher Mrs Deakin booked the same workshop to bring to life their 'Living things and their habitats' science topic. 27 children surveyed their school grounds, looking for pollinator-friendly features whilst considering ways they could make their school's green space even more inviting. They learnt how to sample minibeasts from two different types of habitats; using sweep nets in the tall grasses and wildflowers and using white trays to tree bash in the willow tunnel. Comparing these creatures and their special features gave the children the opportunity to learn about how different minibeasts are adapted to their habitats and why animals such as pollinators need specific types of homes to survive. As a way of giving back to nature, the class made seed pebbles to take home so that they could create pollinator habitat in their own gardens and local green spaces. They were also given blank wood cookie medals so they could make their own personalised pollinator pledges, a promise to take action for their local minibeasts.

##### **Year 3: Coastal wildlife and plastic pollution workshop**

28 Year 3 pupils spent a sunny morning in June exploring the rockpool wildlife on Haven beach in Berwick-Upon-Tweed, their local blue space. The children were highly engaged and loved finding a range of species from different types of seaweed to hermit crabs, shrimps, and sea anemones. Through this the children developed their observation skills and practiced identifying wildlife using keys, whilst learning about classification and grouping animals. The children discussed the tough life these creatures have surviving within their ever-changing habitat and considered how humans might also impact their survival, thinking specifically about pollution and litter. Having thought through some ideas about how they can protect our special coastal wildlife, the children set to cleaning up the beach, picking up any litter they could find. The class enjoyed this so much that they carried on collecting as they made their way back to school. Not only did this activity help develop the children's tool-use and teamwork skills, but it also gave the whole group an immense sense of pride and achievement having contributed to improving the beach and protecting its wildlife.

#### Year 1: Exploring Trees Workshop

25 Year 1 pupils learnt about the trees in their school grounds and how important they are for them and for the river. They built their own willow tree with children playing its different parts and they looked at a range of different leaves, studying their shapes and characteristics and using identification resources to learn the names of each of the trees. They reflected on what they had learnt whilst listening to a story about woodlands and how they came to be, then ended the session with a leaf-bashing craft called a hapazome. This activity not only allowed the children to make their own workshop memento, but also helped develop tool-use skills and creativity whilst encouraging a curiosity about the properties and uses of plants.

#### Education pack

TweedWATCH have developed an education pack for primary school teachers aimed at supporting and encouraging teachers to take their classes outdoors and engage with their local green and blue spaces. This includes spending time getting to know and improving their school grounds and taking the children off site to discover their local river, coastal or woodland areas.

The pack covers topics such as trees and woodlands, river wildlife, invasive plant species and biodiversity as well as water pollution and flooding. Much of the content has been written and trialled with groups, and is now being compiled into a resource for use by teachers in a self-led capacity. The aim is to launch the pack in May, with printed copies delivered to Northumberland schools local to the River Tweed. These schools will also have the option to have TweedWATCH lead some of these sessions, with the aim of building teacher confidence in taking their pupils outside the classroom and connecting them with nature. There will also be access to the resources digitally, for teachers all over Northumberland. These resources will include curriculum-linked lesson plans, supporting resources and topic background notes.

#### Pollinators Along the Tweed

This habitat creation project has delivered engagement and education events. One school session has been delivered in collaboration with TweedWATCH, Royal Highland Education Trust and Tweed Foundation for Higher Advanced Biology Students from Berwickshire High School. Seven pupils and two teachers took part in a series of fieldwork sessions allowing students a chance to explore different methods of ecological surveying techniques for habitats and species. The Pollinators Along the Tweed Conservation Officer led a session on moth trapping where the students learned about various techniques employed for studying and monitoring moths before the contents of moth traps set the night before were explored, and the species caught identified by the students.

Pollinators Along the Tweed also attended the 'Big Beastie Hunt' event at Castle Vale Park, Berwick-upon-Tweed, in July 2024 with TweedWATCH. Sessions ran here included an investigation of the invertebrates found in compost and a wildflower seed 'pebble' workshop, where families could create their own wildflower seed balls to take home and help make their gardens more friendly for pollinators. Throughout the course of the day, approximately 50 people engaged with the activities.

#### ***Activities delivered under the project's cultural programme (Output A3)***

June to August 2023:

- Film Our Gardens
- WaterOrgan installation at Norham & Paxton (events alongside this)
- Participants: 706

September to November 2023:

- River-based animation project with Berwick Youth Project
- Harvest Celebration – Film Our Gardens screenings
- Participants: 60

January to March 2024:

- River celebration events including Horncliffe annual salmon procession (made a short film to document event) and 'Blessing of the Nets' in Norham.
- Film screening of 'The Nettle Dress' and panel discussion at Berwick Film Festival on engaging with the environment.
- Premiere performance of Flux Alluvia in Kelso – new composition by local composer Greg Harrandine, inspired by the Tweed and WaterOrgan data.
- Participants: 161

April 2024 to March 2025:

- 16 public events delivered
- Nearly 600 people participating
- Events delivered in 4 communities along the River Tweed: Norham; Horncliffe; Berwick-upon-Tweed; Tweedmouth
- 11 creative practitioners supported through paid opportunities ranging from one off workshops, larger commissions and an artist residency opportunity
- Collaborating with 8 partners including local community and art groups
- 17 community volunteers engaged in a River Estuary Clean event

The early part of the year was a period of in-depth community outreach and engagement. Behind the scenes, preparation was underway for an exciting summer workshop programme intersecting with many local community events.

The large-scale, river-wide project Meander: Songs from Source to Sea was successfully delivered during May and early June. Kirsty Law, folk singer and musician, walked the Tweed from source to sea playing, writing, and performing along the way. Law's journey along the Tweed through Northumberland featured two public events: a "Musical Conversation" with Siobhan Wilson on Norham Village Green and "The Final Flotilla", a canoe flotilla travelling from Norham to the mouth of the River at Berwick upon Tweed for the final leg of the journey.

The second quarter was by far the busiest part of the year for Connecting Threads in Northumberland. Along the Lower Tweed, they engaged with local communities through a range of workshops including a giant salmon puppet-making workshop at the Horncliffe Beer and Music Festival with artist Morgan Graham and several workshops aimed at young people such as the Story Stick Workshop in collaboration with Berwick Library. The Berwick Bridge 400 residency developed strong links with local people through dedicated engagement and workshops by artist Annie Lord. One highlight was the Berwick Bridge 400 Celebration Weekend, attended by hundreds of people who participated in several workshops supported by Connecting Threads. During the residency, Lord delved into the Berwick archive to research the individual workers who built the bridge and made a set of paints using sandstone from the bridge itself. In turn, these will now be held in the archive. The residency will conclude with final public engagement events in 2025.

The final event in the autumn of 2024 was the Tweed River Estuary Clean in September. 17 volunteers took part in the river clean around the Tweed estuary, with some collecting litter from boats, accessing hard to reach parts of the river. 20 bags of rubbish were collected by the volunteer team.

Total attendees across two years approx. 1527

## Wildlife and Biodiversity additional information

### Biodiversity improvements (Output B1)

Norham - Norham Castle: The Conservation Officer engaged with English Heritage to develop plans to establish a wildflower-rich grassland at Norham Castle with an area of 2,500m<sup>2</sup> proposed to be seeded with local wildflower seed and introduction of a sensitive management regime. Support through Pollinators Along the Tweed facilitated English Heritage's national 'King's Meadows' project at Norham Castle. As a scheduled monument site, English Heritage needed to seek curatorial consent for ground preparation to enable seeding. As part of the site's future woodland work programme, Pollinators Along the Tweed also looked at opportunities to advise on and enhance the woodland on site for pollinating insects.

Berwick-upon-Tweed - Berwick Castle and Ramparts: The Conservation Officer met with English Heritage to discuss opportunities to create and enhance grassland habitat for pollinating insects across the site. Initial areas across the site were earmarked for potential habitat interventions for pollinators, totalling at least 6,300m<sup>2</sup>. Opportunities discussed included establishing areas of species-rich grassland through seed and changes in rough grassland management to better support pollinators. As a scheduled monument site, curatorial consent for any ground works had to be secured. A scything workshop for English Heritage to train staff and volunteers in traditional meadow management has also been discussed.



Northumberland County Council: The Conservation Officer had initial conversations with Northumberland County Council about working together through the project to create and enhance habitat for pollinators on their sites. Key challenges identified were capacity and machinery. Working with NCC's Parks Officer, the Conservation Officer has delivered community events in Berwick-upon-Tweed to raise awareness of the project and pollinators, and connect with communities in the area.

In collaboration with Children North East and Northumberland County Council, Pollinators Along the Tweed supported the construction of a bug hotel in Castle Vale Park, Berwick-upon-Tweed, in September 2023. The Conservation Officer provided advice on bug hotel features to include to support pollinators, provided materials including cob brick materials for bees, and facilitated the construction session at the Park involving two Children North East staff and two young people. This engaged with Children North East's youth Social Action Group as part of their 'Bettering Berwick's Biodiversity' project.

The Pollinators project had a gap of 4 months between Charlotte Rankin's departure as Project Officer in September 2023, and the arrival of her replacement, Kate O'Leary, in January 2024. It inevitably took some time to become familiar with the project and best next steps across a large project area. (Buglife are also working through some senior management changes). Since coming into post Kate has met with English Heritage and further updated the meadow enhancement plans for Norham Castle and Berwick Castle. At Berwick, the areas to be planted were finalised. 3 areas totalling 4000 m<sup>2</sup> will be enhanced in September 2025, two with wildflower seed and the other with plug plants which will be run as a volunteer event. The Project Officer has also done a site visit and site survey at Horncliffe house for a field 1.5 ha in size. Those enhancements plan have been finalised with Yellow Rattle seed and plug plants to be introduced to the site in 2025.